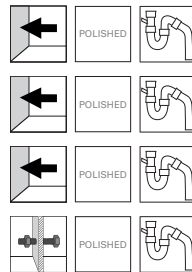


Wash basin ED2

Art. no.	ED2
GTIN	7055570014059
Art. no.	ED2R
GTIN	7055570014363
Art. no.	ED2L
GTIN	7055570014738
Art. no.	ED2B
GTIN	7055570013953



Overall dimension in mm	331 x 338 x 239
Depth in mm	106
Material	AISI 304
Material thickness in mm	1,25
Installation height in mm	850
Product load in N	1000
Gross weight in kg	4.50
Weight, pallet	160.00
Pcs per pallet	30
Made in	Norway

Description

Vandal resistant Hand Wash Basin in stainless steel 18/10, for wall mounting. Complete with closed shroud for concealed in- and outlet. Supplied with integrated waste and water trap.

Hand Wash Basin ED2 can be supplied with left or right hand taphole on request.

Installation

Fasten the top and bottom fixing bracket to the wall. Connect water trap to the outlet. Place the basin onto the top bracket and finally secure to the lower bracket.

