



mediclinics



Hand dryer Troubleshooting Guide
Speedflow



Troubleshooting Guide **Speedflow**

What to do if hand drier....

- does not work
- runs continuously (non stop)
- **presents a wrong performance**
 - ...running "on and off"
 - ...blowing "cold air"
 - ...giving a weird noise
 - ...only works heating element becoming red-hot
 - ...giving a low blow
 - ...presenting sparks

These tasks must be performed by a qualified technician

Troubleshooting Guide Speedflow

Does not work

No electricity supply

- Check master switch has not been triggered.
- Check that equipment is correctly plugged.
- Make sure it has the proper power.



Installation fault

- Check if all wiring connection to terminal block are OK.



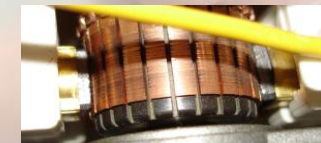
Led sensor of ECU might be dirty

- Make sure LED sensor visor is completely clean.
- Adjust detection distance in ECU turning the potentiometer.
- Check if the cover fits well with the base fixed with the screws and without interfering with detectors.



In other case

- Check coal motor brushes condition and make sure motor is working properly.
- Check that any external object is blocking the rotor.
- Make sure that ECU is feeding the motor and any component isn't damaged.



Troubleshooting Guide **Speedflow**

Dryer runs continuously (non-stop)

Over-sensitivity

- Adjust detection distance in ECU turning the potentiometer.
- Check if the cover fits well with the base fixed with the screws and without interfering with detectors.



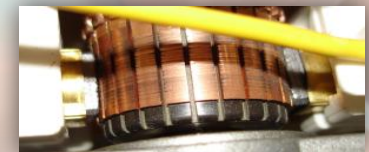
Target too close to dryer

- Adjust detection distance in ECU turning the potentiometer.
- Check if equipment installation is done according installation manual.



LED sensor might be dirty

- Make sure LED sensor visor is completely clean.



In other case

- Check coal motor brushes condition and make sure motor is working properly.

Make sure that ECU is feeding the motor and any component isn't damaged.



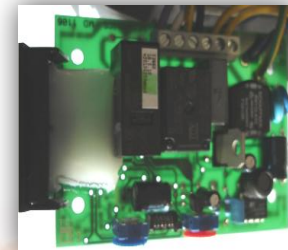
Troubleshooting Guide Speedflow

Dryer presents a wrong performance

...running "on and off"

ECU doesn't work properly

- Make sure that ECU is feeding properly the motor and any component isn't damaged.
- Check if all wiring connection are right

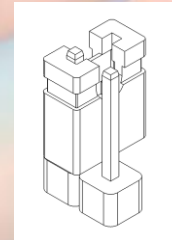


...blowing "cold air"

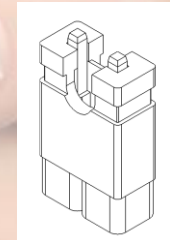
Heating element disconnected

Put correctly the jumper

Heating component connected



Heating component disconnected



Internal temperature exceeded the maximum

- Wait for two minutes to restore thermal protection of heating element.



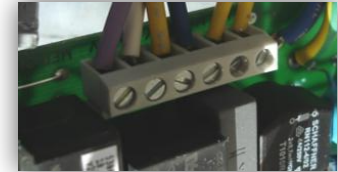
Troubleshooting Guide Speedflow

Dryer presents a wrong performance

...blowing "cold air"

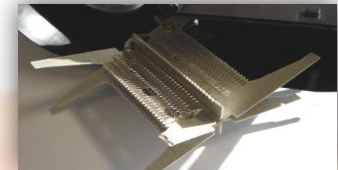
Heating element is unplugged

- Check all wiring connections from terminal board are well placed.
- Make sure that heating element is well power supplied



Heating element is damaged

- Replace heating element.



Troubleshooting Guide Speedflow

Dryer presents a wrong performance

...giving a weird noise

Han dryer
fixation

- Check if silent blocks in the rear part of the base are well placed and base is correctly fixed to the wall. Check that cover is well fixed to the base.



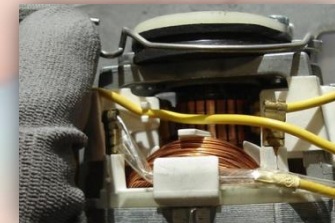
Component
fixation is
loosed

- Check if motor is well fixed to the base, if not, fix suitably the motor. Check that the rest of internal components are well fixed.



Root cause
fan wheel

- Confirm that fan wheel is well fixed, well placed and not damaged. Try to disassemble and reassemble fan wheel if noise continues, replace fan wheel for a new one.



Root cause
ECU

- Make sure that ECU is feeding properly the motor and any component isn't damaged. If not, replace the ECU



ECU: Electronic control unit



Troubleshooting Guide **Speedflow**

Dryer presents a wrong performance

...only works heating element becoming red hot

Coal motor brushes over

- Check if coal motor brushes are well assembled and in good condition, If not, replace coal brushes set.

Other engine fault

- Check if motor works properly and if any component is damaged. If necessary replace damaged component.

Motor is not wired properly

- Check motor is properly wired to ECU.



Troubleshooting Guide Speedflow

Dryer presents a wrong performance

...giving a low blow

Insufficient
voltage
value

- Make sure ECU is supplied with the proper power and hand dryer is properly grounded.

Fan wheel
loosed

- Confirm if fan wheel is properly fixed . If not, fix fan wheel suitably.

In other case

- Check if motor is working properly. If yes, replace ECU.

...presenting sparks

Coal motor
brushes over

- Check if coal motor brushes are well assembled and in good condition, If not, replace coal brushes set.

The motor is
damaged

- Check if motor works properly and if any component is damaged. If necessary replace motor .





mediclinics

Hand Dryers and Washroom Accessories



www.mediclinics.com

Skype: mediclinics

