

Ceramic Urinals with Radar Flushing Unit SLP 12R, SLP 37R

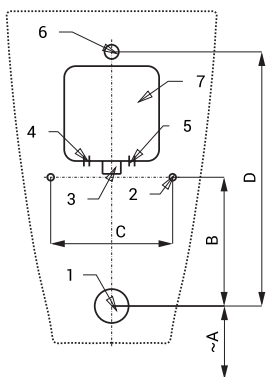


SLP 12 - VILA WITHOUT A COVER SLP 37 - VILA WITH A COVER

Characteristics

- economy flushing by 1 liter of water
- easy installation
- whole flushing unit is placed behind the urinal
- system reacts only on the direct use of the urinal (it analyses changes, which are proceeded inside of the urinal, when a liquid is flowing through)
- adjustable flushing time 0,5 - 15,5 s
- parameters adjustment by remote control SLD 04 without the necessity to dismantle the urinal from the wall (acoustic setting indication)
- automatic flushing after each 6 hours non-use
- monitoring of battery capacity (for models with index B)
- water flow could be regulated by ball valve
- radar flushing unit recharges a water to the siphon after each flushing

Installation Drawing



- 1 - waste outlet Ø 50 mm
- 2 - holes for fitting
- 3 - water supply
- 4 - power supply 230 V AC (SLP 12/37RZ)
- 5 - power supply 24 V DC (SLP 12/37R)
- 6 - inlet fitting
- 7 - mounting box

Dimensions (mm)	A	B	C	D
SLP 12 - VILA	415	190	180	375
SLP 37 - VILA	415	190	180	375

* for the height of the front edge of the urinal 650 mm above floor

Supply Specification

- | | | |
|----------|--------------------|--|
| SLP 12R | - Supply No. 01124 | ceramic urinal with the radar flushing unit, plastic mounting box with brass screw coupling, electromagnetic valve and ball valve, inlet fitting with a rubber sealing, siphon, mounting set, plastic cover (SLP 37xx), power supply (for models with index RZ), 4 pcs. AA alkaline batteries 1,5 V, 2700 mAh with battery case (for models with index RB) |
| SLP 12RZ | - Supply No. 01125 | |
| SLP 12RB | - Supply No. 11127 | |
| SLP 37R | - Supply No. 01374 | |
| SLP 37RZ | - Supply No. 01375 | |
| SLP 37RB | - Supply No. 11377 | |

Technical Specification

- | | |
|----------------------------------|-------------------------------------|
| Mounting box dimension | 140 x 140 x 75 mm |
| Operating voltage | |
| ▪ SLP 12R, 37R | 24 V DC |
| ▪ SLP 12RZ, 37RZ | 230 V AC/50 Hz |
| ▪ SLP 12RB, 37RB | 6 V |
| Power input | |
| ▪ operating by 24 V DC | 8 W |
| ▪ operating by 6 V | 3 W |
| Recommended flow pressure | 0,1 - 0,6 MPa |
| Rate of flow | 18 l/min (inf.data) |
| Water inlet | male thread G 3/4" |
| Water outlet | inlet fitting with a rubber sealing |



Recommended Accessories

- | | | |
|---------|--------------------|---|
| SLZ 01Y | - Supply No. 05012 | power supply 24 V DC for operating of max. 5 pcs. of flushing units |
| SLZ 01Z | - Supply No. 05011 | power supply 24 V DC for operating of max. 9 pcs. of flushing units |
| SLZ 04Y | - Supply No. 05042 | power supply 24 V DC on DIN rail, for operating of max. 5 pcs. of flushing units |
| SLZ 04Z | - Supply No. 05041 | power supply 24 V DC on DIN rail, for operating of max. 9 pcs. of flushing units |
| SLZ 04X | - Supply No. 10049 | power supply 24 V DC on DIN rail, for operating of max. 15 pcs. of flushing units |
| SLZ 06 | - Supply No. 05060 | power supply 24 V DC for operating of max. 1 pc. of flushing unit |
| SLD 04 | - Supply No. 07040 | remote control for an adjustment of parameters |
| SLA 11 | - Supply No. 06110 | deodorising urinal screen - orange, mango scent |
| SLA 11A | - Supply No. 06111 | deodorising urinal screen - red, kiwi and grapefruit scent |
| SLA 11B | - Supply No. 06112 | deodorising urinal screen - transparent, honeysuckle scent |
| SLA 11C | - Supply No. 06113 | deodorising urinal screen - blue, cotton bloom scent |
| SLR 01 | - Supply No. 08010 | mounting frame to the plasterboard for urinal and flushing unit with mounting box behind urinal |
| SLA 36 | - Supply No. 06360 | set of 4 pcs. alkaline batteries AA 1,5 V, 2700 mAh (for models with index B) |